

## +GF+ Signet Flow Measurement & Instrumentation

George Fischer Signet delivers sophisticated, advanced flow and analytical technology, which offer accuracy, dependability, ease of use, and minimal maintenance. Every sensor, transmitter, controller and monitor manufactured meets the highest of standards. Engineered for performance, Signet products are ideally suited for Chemical Process, Food and Beverage, Life Sciences, Shipbuilding, Semiconductor, Water and Waste Water Treatment, including the Pool Industry, and Agriculture.

*This pricelist is designed to be read in conjunction with the +GF+ Signet Catalogue, available on request, or the website, [www.gfsignet.com](http://www.gfsignet.com). For details on the +GF+ Signet range of Analytical Instrumentation, please refer to the separate price list.*

### 2551 INSERTION MAGMETER

Signet Insertion Magmeters feature no moving parts to wear or foul and high accuracy sensing without the excessive costs associated with full bore magnetic flow units. The units accurately measure flow in fluids containing a high content of particles, solids and fibres, making them an excellent choice for applications with dirty fluids. A minimum conductivity of 20µS is required.

Magmeters have three signal output options: frequency, digital, or 4-20mA, for long distance signal transmission application requirements. Basic diagnostic capabilities allow the user to optimize the meter for each application. The 4 to 20mA output is factory spanned and can be modified in the field using the PC compatible accessory set-up tool, model 3-0250.

Suits flow velocities 0.05 to 10 m/s, and pipe sizes up to DN300



Code	Price
<b>Blind Meter, Frequency Output</b>	
SG3-2551-P0-11	
SG3-2551-P1-11	
SG3-2551-P2-11	

Code	Price
<b>Blind Meter, 4-20mA Output</b>	
SG3-2551-P0-12	
SG3-2551-P1-12	
SG3-2551-P2-12	



Code	Price
<b>With Display, Frequency Output</b>	
SG3-2551-P0-41	
SG3-2551-P1-41	
SG3-2551-P2-41	

Code	Price
<b>With Display, 4-20mA Output</b>	
SG3-2551-P0-42	
SG3-2551-P1-42	
SG3-2551-P2-42	

### 2552 INSERTION MAGMETER

Ideal for dirty and high solid content liquids, and hot tap installations. 316 Stainless Steel Body, suits flow velocities 0.05 to 10m/s, and pipe sizes up to DN2500. The 3-2552-3 meter has an insertion depth of 419mm, and so is suitable for accurate flow measurement in extremely large pipe diameters, and/or heavy wall pipes such as PE, even in hot-tap applications.

2552-1 and -2 meters mount using an 1-1/4in thread, 2552-3 uses an 1-1/2in thread. Sensors are available either with a fixed 7.6m cable, rated NEMA 4 (IP65), or with a watertight connector and separate cable, giving a NEMA 6X rating (IP68). This configuration is suited to a maximum of 3m submersion depth for no more than 10 days continuous submersion.

#### Fixed Cable Sensor, IP65



Code	Price
<b>Frequency or Digital (S3L Output)</b>	
SG3-2552-22-A-11	
SG3-2552-34-A-11	
<b>4-20mA Output</b>	
SG3-2552-22-A-12	
SG3-2552-34-A-12	

#### Watertight Connector Sensor, IP68

Code	Price
<b>Frequency or Digital (S3L Output)</b>	
SG3-2552-22-B-11	
SG3-2552-32-B-11	
<b>4-20mA Output</b>	
SG3-2552-22-B-12	
SG3-2552-34-B-12	

Code	Price
<b>4m Connector Cable</b>	SG3-5541-4184
<b>6m Connector Cable</b>	SG3-5541-4186
<b>Custom cable lengths available on request</b>	

PRICES INDICATED DO NOT INCLUDE GST



### FLOW SENSORS

Paddlewheel sensors offer traditional, dependable, and accurate flow measurement. They can be used in conjunction with separately mounted digital displays, or as blind sensors.

#### 515 ROTOR-X PADDLEWHEEL

Suit flow velocities of 0.3 to 6m/s. They have a sinusoidal output capable of driving a self powered flowmeter, such as the 3-5090.



Standard Sensor  
(with red cap)

Integral Sensor

Code	Price
<b>Standard Sensor</b>	
SGP51530-P0	
SGP51530-P1	
SGP51530-P2	

<b>Integral Mount Sensor</b>	
SG3-8510-P0	
SG3-8510-P1	

Compatible with: 5090, 9900 Transmitter

#### 2536 ROTOR-X PADDLEWHEEL

Low flow model, with process ready open-collector output, and good noise immunity. Suit flow velocities 0.1 to 6m/s, accepts a 3-24V power supply.



Standard Sensor  
(with blue cap)

Integral Sensor

Code	Price
<b>Standard Sensor</b>	
SG3-2536-P0	
SG3-2536-P1	
SG3-2536-P2	

<b>Integral Mount Sensor</b>	
SG3-8512-P0	
SG3-8512-P1	

Compatible with 9900 Transmitter

#### 525 METALEX FLOW SENSOR

Suitable for extreme pressures and temperatures, for flow velocities 0.5 to 6m/s. Requires socketweld or weldon installation fittings sold separately.



Compatible with 9900 Transmitter

Code	Price
<b>Standard Sensor</b>	
SGP525-1	
SGP525-2	

#### 2537 BLIND PADDLEWHEEL FLOW SENSOR

The 2537 blind Paddlewheel flow sensor combines a traditional paddlewheel flow sensor with a blind output option. It is a standalone unit, with no external display. Measures flow velocities down to 0.1 m/s, Outputs can be connected directly to Chart Recorders, PLC's, or pump VSD's by using either the pulse divider with configurable range and width, or the programmable 4-20mA Output.

The 2537 can also be used as a flow switch, with programmable low and high set points, and adjustable hysteresis.



Stand-alone unit

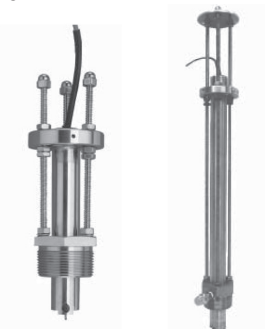
Code	Price
<b>Pulse Divider &amp; Flow Switch Output</b>	
SG3-2537-2C-P0	
SG3-2537-2C-P1	

<b>4-20mA Output</b>	
SG3-2537-6C-P0	
SG3-2537-6C-P1	

#### 2540 STAINLESS STEEL FLOW SENSOR

Strength and corrosion resistance of 316 Stainless Steel, and the convenience of an insertion sensor design. Suitable for flow velocities 0.1 to 6m/s.

2540-2 is suitable for pipes up to DN600. The 2540-4 suits up to DN900, and includes a bleed valve for hot tap installations. Both models mount using a 1-1/2in Thread.



Standard Sensor

Hot-Tap Sensor

Code	Price
<b>Standard Sensor</b>	
SG3-2540-2	
SG3-2540-4	

Compatible with 9900 Transmitter



## 9900 FLOW TRANSMITTER

"At a glance visibility" due to extra large characters and a digital bar graph from an auto-sensing backlit LCD display. Single sensor input compatible with signals from all GF Signet Flow, pH/ORP, Conductivity, Salinity, Pressure or Temperature sensors as well as any non-GF Signet sensors that outputs a 4-20mA signal (requires GF Signet 8058 signal convertor).

One permanent and one resettable totaliser, LED relay or warning indicators. Analogue (4 – 20MA) and open collector with user selectable pulse units output.

Relay module and batch controller modules are optional extras and can be retrofitted (Panel version only).

Panel or field mount versions available. Requires 12 to 32VDC power supply.

SG3-9900-1  
(Field Mount)



SG3-9900-1P  
(Panel Mount)



SG3-9900-1BC  
(Panel Mount)

### MOUNTING KIT



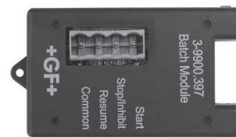
Universal mount kit to mount field transmitter on to a wall or other flat surface  
SG3 - 8050

Integral mount kit to mount field transmitter on to the top of an integral sensor  
SG3 - 8051

### OPTIONAL EXTRAS



SG3-9900.393  
(Relay Module)



SG3-9900.397  
(Batch Module)

Measurement & Control

## 5090 SENSOR POWERED FLOW MONITOR

Ideal for stand-alone applications as no power source required. Combine with the 515 Rotor-X paddlewheel flow sensor for an economic flow monitoring solution.

Analogue display with front panel calibration options.

SG3-5090



## 8900 MULTI-PARAMETER INSTRUMENT

This instrument is built to order from user specified modules. With up to 6 inputs that can include flow, pH/ORP, conductivity, pressure, temperature and/or turbidity and up to 4 outputs, (analogue and relays). AC and DC power options are available.

Advanced relay logic allows up to 3 measurement sources to trigger relay.

Derived measurements include: difference, sum, ratio, percent recovery, percent rejection, percent passage and BTU (or Kw)

Price varies depending on configuration; please enquire.

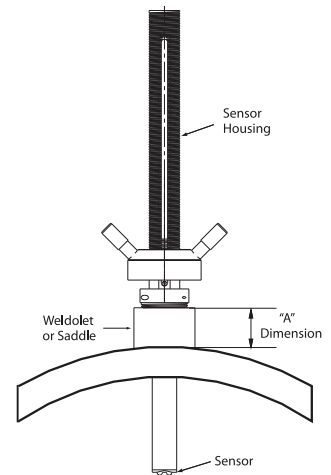


### INSTALLATION FITTINGS

All the previously mentioned Flow Sensors measure flow velocity at a set point, and from this calculate the total flow rate through the pipe system. For accurate and repeatable measurements fully developed turbulent flow is required. For full details and installation requirements refer to GF Signet Literature.

For optimum accuracy Signet recommend that the pin on a paddlewheel flow sensor, or the tip of an Insertion Magmeter, is positioned at a point 10% of the Pipe ID from the inside of the pipe wall.

Installation fittings broadly fit into 2 categories, depending on the flow sensor to be used.



### FITTINGS FOR 2540 AND 2552 METAL FLOW METERS

The 1-1/4in or 1-1/2in mounting thread allows the use of a conventional branch saddle, or Weld-o-let.

Sensors can easily be fitted to PE pipes (as shown here) using Electrofusion Saddles and threaded adaptors.

Hot-tap installations can also be easily incorporated.

### FITTINGS FOR 515, 2536, 2537, PADDLEWHEELS, AND 2551 INSERTION MAGMETERS

For smaller diameter Schedule 80 PVC pipelines Signet offer off the shelf installation fittings which meet this requirement. For other materials, configurations, and pipe diameters a variety of installation options are available.

Flow meters are available with differing insertion depths to suit the pipe diameter:

Size Code	Insertion Depth	Nominal Pipe Size
PO	51mm	up to DN100
P1	84mm	DN100 to DN200
P2	160mm	DN250 and above

For plastic, and other pipes with thicker walls, it is sometimes necessary to use a longer sensor.

### SCHEDULE 80 PVC TEES

Suit Schedule 80 PVC Pipework. 80 and 100mm sizes compatible with NZS PVC Pipe



Size	Code	Price
15mm	SGPV8T005F	
25mm	SGPV8T010F	
32mm	SGPV8T012F	
40mm	SGPV8T015F	
50mm	SGPV8T020	

### PVC CLAMP-ON SADDLES

Suit Schedule 80 PVC Pipework. 80 and 100mm sizes compatible with NZS PVC Pipe



Size	Code	Price
80mm	SGPV8S030	
100mm	SGPV8S040	
150mm	SGPV8S060	

### PP ADAPTOR INSERTS

For larger pipe diameters it is necessary to use either a conventional saddle, or weld-o-let, in conjunction with a threaded adaptor. For plastic pipes the Alprene saddles from Asmuss Group are ideal. Some machining may be required.



	Code	Price
Suit P0 Length Sensor, and 32mm Female BSP Saddle	SGI515P0/032	
Suit P1 Length Sensor, and 50mm Female BSP Saddle	SGI515P1/050	
Suit P2 Length Sensor, and 50mm Female BSP Saddle	SGI515P2/050	

**Note:** Prices are for inserts only. Saddles are sold separately.