

MULTI/JOINT®-XL

Y Our innovation
Your profit



One size fits all larger sizes as well

GEORG FISCHER +GF+

ISO 9001 registered by
GAS TEC

ISO 14001 registered by
GAS TEC

MULTI/JOINT® -XL Family

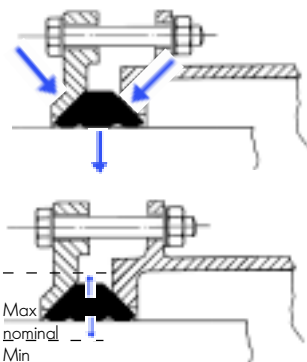
The MULTI/JOINT®-XL provides a flexible seal over a large range of different pipe diameters in the nominal dimensions of DN300 up to DN600. Resulting in lower stocks and no more loss of valuable time searching for the right product.



DN	Outside diameter
300	315-337
350	354-380
400	400-429
450	450-482
500	500-532
550	548-580
600	605-637



The double conical ring (which originates from the original WAGA-DK SYSTEEM®) which is developed in 1957 has been adapted to nowadays requests of users in the field.



Developing the large range tolerance couplers resulted in an increased range without decreasing the lifetime of the seal.

The sealing part is engineered with a triple sealing shape to increase the range and optimise sealing onto the pipe.

The rubber ring is designed for the nominal diameter within the specified range. This means that, when the coupler is mounted on the smallest diameter the rubber is compressed. And when mounted on the largest it is extended.

This method guarantees an excellent seal and yet a flexible connection.

The MULTI/JOINT® XL has an angularity of 8° nominal per socket side, depending on the outside diameter and insertion of the pipe.

Your profit:

- Reduce stock
- Save time (ordering, warehouse handling)
- Increase reliability
- Environmental friendly
- Save time in installing

Advantages:

- The sealing always makes a perfect seal on any kind of pipe
- Ranges up to 32 mm
- Optimal corrosion protection

The technical data are not binding. They are not warranted characteristics and are subject to change. Please consult our General Conditions of Supply.

Body & Clampings:

GGG40

Coating:

RESICOAT plastic coating layer thickness

min. 250 micron (GSK)

colour: dark red (RAL 3003)

Rubber:

NBR according to EN 682

Bolts & nuts:

standard steel 8.8, delta magni coated*.

Salt spray test acc. to ASTM B 117 and

DIN 50021 750 hours or stainless steel

AISI 304 (A2) teflon coated

Working pressure:

Water 10 bar

Gas 4 bar

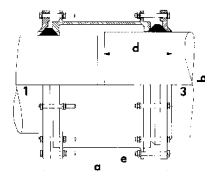
Flanges:

Acc. to DIN 28605 PN10

MULTI/JOINT®-XL 2500

Straight

DN	Connection		Code ST-DM*	a	b	d	e	Weight kg.
	1	3						
400	400-429	400-429	709.004.805	520	600	240	10xM16x140	118,0
500	500-532	500-532	709.004.810	520	720	240	10xM20x130	143,0
600	605-637	605-637	709.004.815	520	820	240	12xM20x130	170,0

**MULTI/JOINT®-XL 2600**

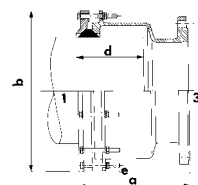
Reduction

DN	Connection		Code ST-DM*	a	b	d	e	Weight kg.
	1	3						
350x300	354-380	315-337	709.006.505	520	551	240	10xM16x140	107,0
450x400	450-482	400-429	709.006.510	520	653	240	10xM16x140	127,0
550x500	548-580	500-532	709.006.515	520	765	240	10xM20x130	154,0

**MULTI/JOINT®-XL 2550**

Flange

DN	Connection		Code ST-DM*	a	b	d	e	Weight kg.
	1	3						
400x400	400-429	400 / PN10	709.007.560	360	600	240	10xM16x140	88,0
500x500	500-532	500 / PN10	709.007.564	360	720	240	10xM20x130	125,0

**MULTI/JOINT®-XL 2650**

Flange reduction

DN	Connection		Code ST-DM*	a	b	d	e	Weight kg.
	1	3						
350x300	354-380	300 / PN10	709.007.550	360	551	240	10xM16x140	78,0
450x400	450-482	400 / PN10	709.007.562	360	653	240	10xM16x140	96,0
550x500	548-580	500 / PN10	709.007.566	360	765	240	10xM20x130	130,0



* standard also available with Stainless steel
for code please check our price list or contact us

The WAGA® sales programme:



Couplings

MULTI/JOINT® 2000 Family
MULTI/JOINT® 3000 Family
MULTI/JOINT® XL-Family
WAGA® 500 Family
Draw-Lock® Family
ST-system DN200 - DN2800

WA2075
WA2015
WA2089
WA2068
WA2500
WA2072

chapter 2

Repair parts

Fittings and equipment for pipe drilling

Additional products and accessories

WA2060
WA2061
WA2062

chapter 3

chapter 4

chapter 5

Also by Georg Fischer:

STEMU® • ELGEF® • INSTAFLEX® • POLYRAC® • PRIMOFIT® • SIGNET program
FLEXALINO® • ELGEF Plus® • PRO-FIT® • CONTAIN-IT® • DIASTAR® • PE-EASY®

Local Distributor

GEORG FISCHER **+GF+**

Georg Fischer WAGA N.V.

Lange Veenteweg 19 / P.O. Box 290, NL-8160 AG EPE / The Netherlands

Tel: +31 (0)578 678378 Fax: +31 (0)578 620848

<http://www.waga.nl> E-mail: info@waga.georgfischer.com